

COLLAR

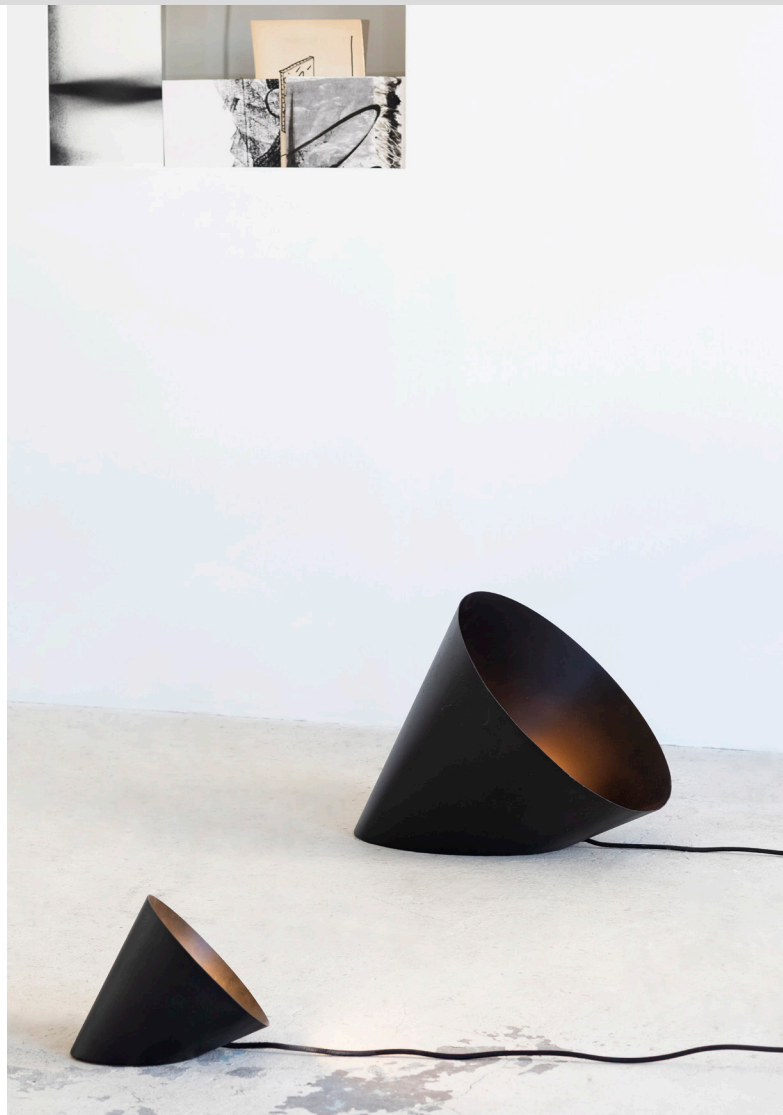
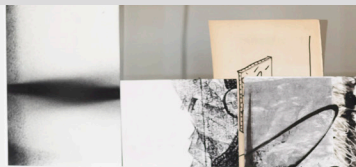
Felix Roobrouck

SERAX

The Collar lamp is a mood light, to be placed on the floor of your home to welcome your guests with a warm, indirect light.

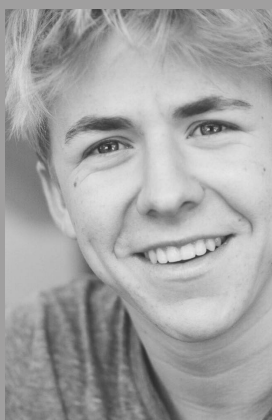
The lamp's typical cone shape is inspired by the white collar you sometimes see on unfortunate dogs after a visit to the vet. Apart from this amusing resemblance, the Collar lamp is above all a straightforward matt powder-coated steel object. The finish on the inside is shiny, which provides an attractive reflection of light.

The Collar lamp is available in two sizes (Ø 400 mm and Ø 200 mm), and the larger version is dimmable. Both lamps can also be mounted on the wall.



Retail price
Small collar lamp - €196,90
Large collar lamp - €429

FELIX ROOBROUCK



Felix Roobrouck studied Industrial Product Design at HOWEST Kortrijk (2016-2019) and is now studying a Master's in Economics. He enjoys designing objects and thinking about the best ways to actually produce them. While he believes that form follows function, he is also convinced that design should be a feast for the eyes.

However, the beauty of an object should not be a cry for attention. Felix feels that the less attention an object demands, the more beautiful it becomes. An object should emanate an air of serenity, while also being bold at the same time. For that very reason, he prefers natural goods over artificial products, and primal forms or derivatives over organic forms. Therefore, Felix seeks to apply the concept of 'beautiful things don't ask for attention' (cf. 'The Secret Life of Walter Mitty') to all his designs.